



# Libbet

NO PROBLEMS -  
ONLY SOLUTIONS

## CAPABILITY STATEMENT

---

| CONSTRUCTION | CIVIL |  
INFRASTRUCTURE | RAIL |

**T5TIKA**  
Listed supplier

**+IMPAC  
PREQUAL**  
Identifying safe Contractors

**SITewise**  
**100%** > 2023/24



[WWW.LIBBET.CO.NZ](http://WWW.LIBBET.CO.NZ)



# Company Profile

At Libbet, our purpose is to deliver solution-focused results. Our promise is to work in complete partnership with our clients to support their strategic objectives and add value to their business.

Founded by Managing Director Wayne Edwards, around the ethos of 'no problems, only solutions', Libbet has worked proactively and collaboratively to successfully deliver projects throughout the North and South islands.

Libbet delivers civil construction projects for a range of clients and are able to operate in complex environments. We add value to projects through our in-house capabilities and our team approach to delivery.

Libbet operates out of Auckland, servicing both the North and South Islands. We have over 40 full time employees, with access to a large group of subcontractors and suppliers that we have engaged on a variety of projects. We provide flexible work environments to meet any deadline.

Libbet's management team comprises industry leaders who work together to make the best strategic decisions so we can provide our clients with a safe, solution-focused service and provide a safe workplace for our employees.

Libbet has a fleet of modern construction and specialised plant to achieve successful delivery of projects.





## CONSTRUCTION

Libbet offer a range of services including refurbishment, maintenance and upgrade projects. Our clients include major infrastructure owners, educational facilities and local authorities, as well as the private sector.

Clients benefit from our highly motivated team who are genuinely delivery focused and passionate about producing high quality results. Our approach is one of collaboration and is based on open and honest communication. Our delivery is underpinned by skilled direct employed labour and strong longstanding relationships with our subcontractors and suppliers.

We have a wide range of diversity and experience ensuring Libbet can complete your project.

---

## CIVIL & INFRASTRUCTURE

We have the resources and expertise to successfully deliver a wide range of civil and infrastructure projects.

Clients benefit from our skilled in-house resources and management of our trusted sub-contractors and suppliers. This consistently allows us to deliver high quality results even on those projects with tight timeframes, technical challenges or access constraints.

We particularly enjoy projects where our “No Problems, Only Solutions” ethos comes to the fore. This may be a technically challenging project or one where we can adopt new technology or innovative methods to deliver efficiently.

---

## RAIL

Our experienced team understands its unique challenges. Libbet has earned its reputation as a leading delivery organisation through its collaborative working with clients throughout New Zealand.

Key to Libbet’s success is our understanding of the rail specific Health and Safety requirements and the challenges of working within the live rail environment. We thrive on effectively planning and working around access opportunities to enable safe and efficient delivery while minimising disruption to rail operations.



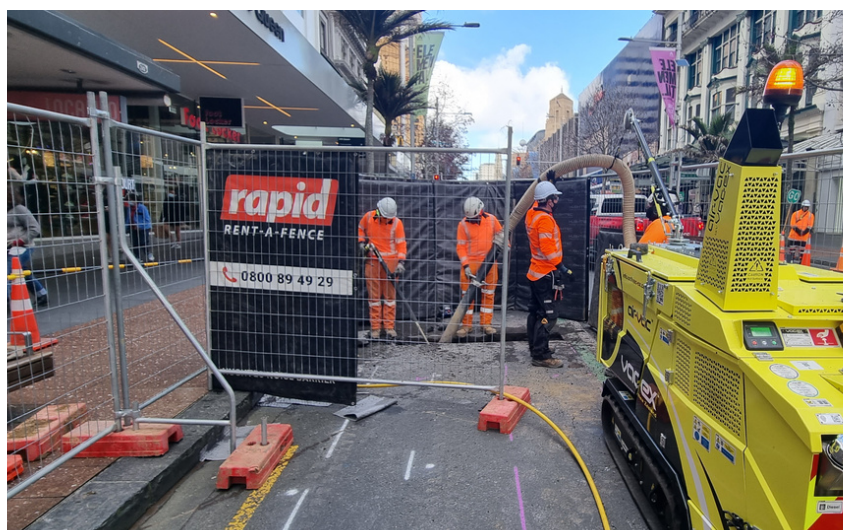


# Overall Capabilities

- Concrete construction
- Pre-cast concrete supply and installation
- Pavement construction and repairs
- Drainage
- Bulk and detailed excavation
- Service investigation and location
- Service installation
- Retaining walls
- Piling and underpinning
- Hard and soft landscaping
- Facility maintenance and refurbishment
- Survey support and management
- Modelling and Digital Engineering
- Rail Related Construction
- Commercial/Industrial Buildings
- Seismic Strengthening
- Carpentry works
- Fencing and gates
- Air Vacuum Excavation









# Project Profiles

## MIT BALUSTRADE UPGRADE PROJECT

**Client:** Manukau Institute of Technology (MIT) now Te Pūkenga.

Libbet retrofitted 400 steel posts and 800m of aluminium capping to strengthen the existing glass balustrade system. The glass balustrade system spanned 5 levels with multiple tenants and around a central atrium including the Manukau rail station access. Access was a particular challenge of this project and meant works were completed during night shifts and using innovative solutions.

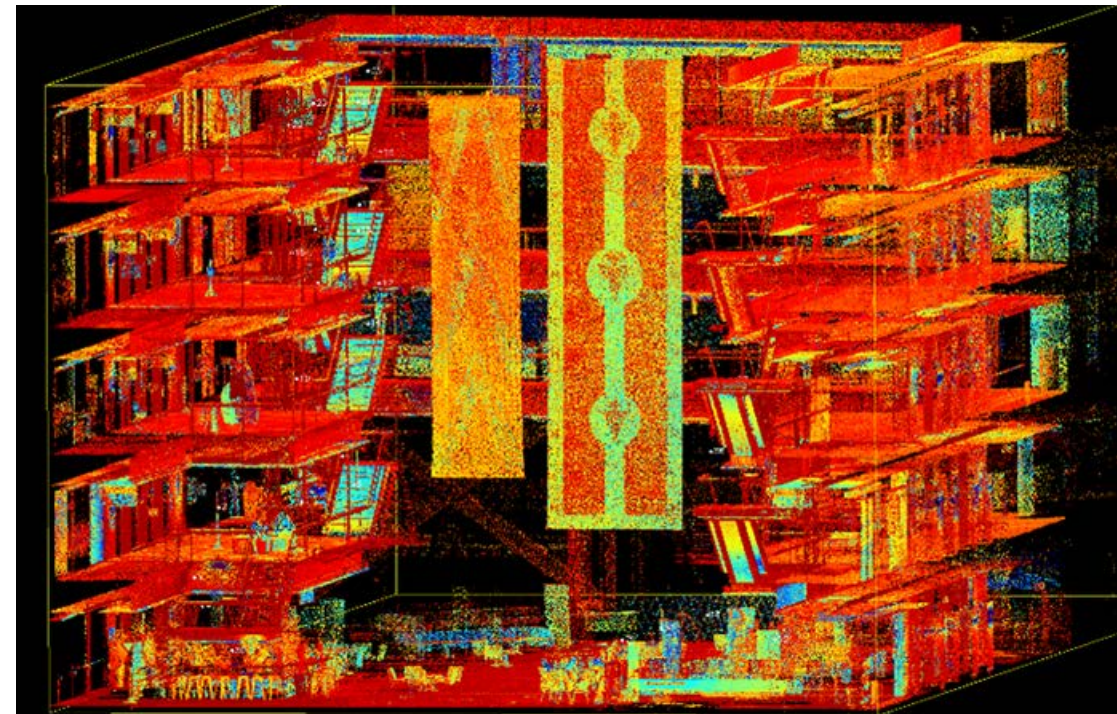
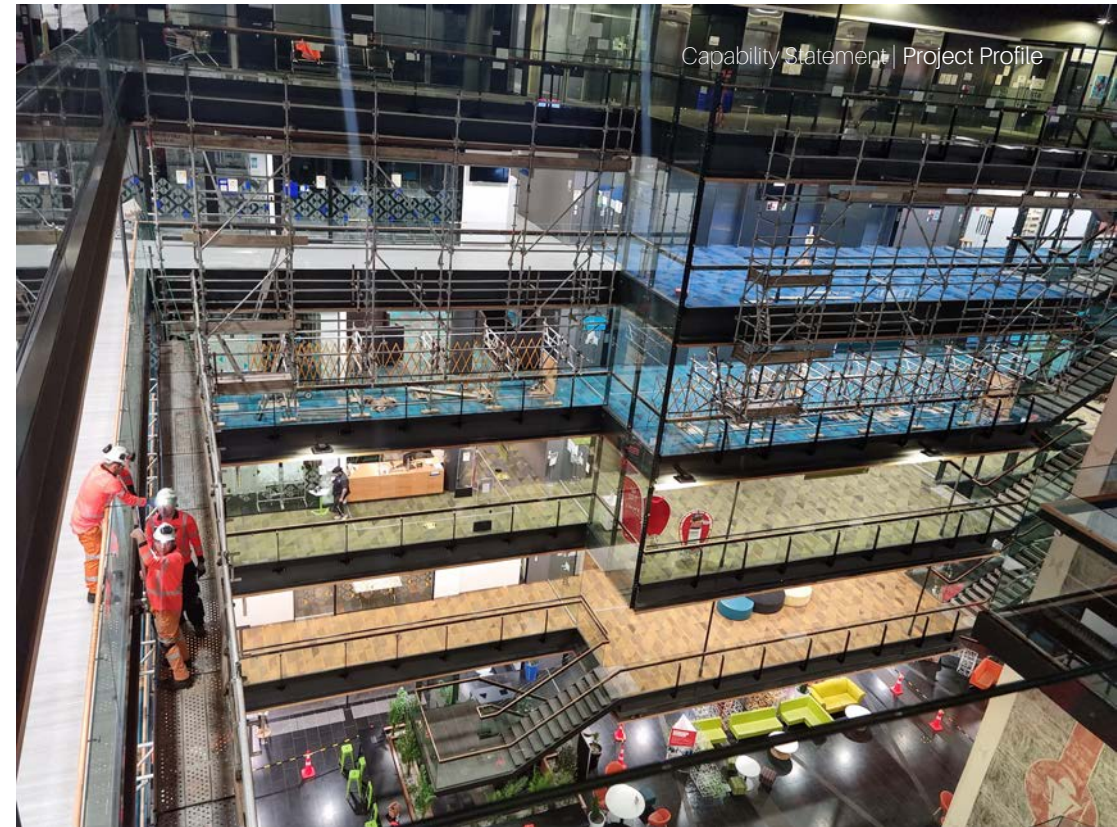
Libbet worked with their trusted scaffolding contractor and temporary works designer to develop a cantilevered scaffold. We also modified and used a compact materials hoist to enable lifting the steel posts carefully against the glass with zero breakages.

Libbet's in house surveyor used 3D scanning to confirm the dimensions of post required in each area. This saved 50% on access costs and significantly reduced disruption to building users with access only required for a short period to install each post.

The skill, dedication, and attention to detail of Libbet's in-house install team meant this project was completed ahead of programme, without safety incident and with the designer's objective met – that “the new posts and capping rail should look like they have always been there”.

*"Thank you once again for all your input and commitment for a successful delivery, on time, safely and with no cost variations. Fantastic work and great to have you all involved and achieve our end goal."*

*Shiu Verma Property & Infrastructure Manager, MIT & Unitec*







## CRL C8 – OTAHUHU STATION WORKS

Client: City Rail Link Ltd

The C8 project was the ideal opportunity for Libbet to showcase its capabilities on a technically challenging project. This included self-performing carpentry work, managing multiple subcontractors or and management and co-ordination of works with multiple stakeholders. The scope of the C8 project included constructing a new pedestrian overbridge, a staff accommodation building, a complete platform fit out including ticketing, gates, fencing, canopies, lighting, seating, bins, signage and CCTV. All of this constructed in a live Bus and Rail Station environment.

Innovation on this project included the contractor proposed re-design of elements of the new footbridge from in-situ concrete to pre-cast. This enabled efficient installation during the typically short access opportunities when working adjacent to and over a live railway line. Apart from the piling works on the island platform the remainder of the footbridge was installed during daytime with trains running or during short night shifts with 4-5 hours of access. As well as the pre-cast concrete fabricated off site, the steel and concrete bridge deck had the balustrade system installed off site. This reduced impact on the operational railway and mitigated working at height risks.

*“The project was complex involving high-risk works within and directly adjacent to the live rail corridor and required a highly collaborative approach to accommodate multiple stakeholders including, Auckland Transport, KiwiRail and Transdev. Libbet’s project site was in the middle of an operational bus and train station, directly interacting with the public, and this required watertight H&S management practices and excellent site housekeeping.”*  
*Lisa Pilot, Project Manager, C8 Otahuhu Project, City Rail Link Project*





## CRL C8 – NEWMARKET

Client: KiwiRail

Libbet were engaged by KiwiRail to undertake the Civils works as part of the City Rail Link C8 Newmarket works. Initially engaged for the early works which included the installation of new signalling ducting and signal structures south of Newmarket Station. Libbet then completed the next stage of the works which involved some complex civil works for new concrete slab track within the Newmarket junction area.

Particular highlights included working with KiwiRail on the detailed planning and execution of new track install on concrete track slab. This involved mobilising the whole Libbet workforce for the Labour Weekend to carry out core drilling, hole cleaning with compressed air and epoxying of 1000 track fixings. This was followed by Christmas block of line works to excavate, form, reinforce and pour new fibre reinforced concrete slab followed by the install of a further 2500 track fixings.

*"Wow, what a mammoth effort from our teams. From planning to execution and all the changes in-between. It was a valiant effort and I would just like to thank all involved for what was an epic finish to this BoL. Thanks to Jon and team Libbet for sticking to it, it has been a long year and now you can reap your rewards for all the hard work done." Markum Ellis, Project Manager, KiwiRail*





## EMU DEPOT PIT BUILDING AND GRAFFITI WASH

Client: Auckland Transport

Libbet were engaged by Auckland Transport to construct a specialised post incident inspection and maintenance building at their EMU Maintenance Depot at Wiri. The building was 30m long with a challenging pit profile integrated into the structural concrete foundations.

The foundations also supported 36 steel pedestals to elevate rail that together with the pit profile promoted ease of EMU inspection and maintenance.

The primary challenge faced during construction were developing and implementing innovative methodologies to maintain production within an operational maintenance depot with many access and physical constraints.

One highlight was investigating the appropriateness and ultimate use of a mobile 'Mantis' tower crane to install structural steel components and establish construction materials over existing buildings and infrastructure.

The scope also included a 6m extension of an existing Graffiti Wash Building and supply and installation of high-level steel maintenance platforms through the full extent of the building.

*"Libbet's hard work was carried out at the very centre of our facility. They were so intent on ensuring the programme ran smoothly with minimal disruption to all key stakeholders that we hardly noticed they were on site at all."*





## Survey and Digital

Investment in state-of-the-art surveying hardware and software allows our team to service any survey requirements for entire project lifecycles. From concept and design support with topographic and investigation surveys, through to the construction phase with set-out, volumes and settlement monitoring to final as-builts and certifications.

Precision, accuracy, timeliness and adaptability are key drivers of our work in the survey and digital space.





# Meet the Team



**WAYNE EDWARDS** |  
MANAGING  
DIRECTOR

Wayne is a highly skilled construction professional with a project portfolio spanning more than 25 years. He has delivered a broad range of complex and large-scale rail and civil projects across the UK and New Zealand. Wayne started Libbet in 2015 driven from a passion to deliver multi-disciplined infrastructure solutions to customers within the transport sector. He is responsible for overseeing business operations and providing the strategic leadership to Libbet. He works with his Senior Leadership team in the development and implementation of the strategic plans and company policies, maintaining an open dialogue with stakeholders, and driving organisational success.

Relationships are a key aspect of success for Wayne, he strives to develop open, honest and trusting relationships with his clients and stakeholders. He has embedded this culture within his team to ensure that Libbet delivers the best in project solutions, in a collaborative and open environment. He is an efficient and proactive leader with proven performances in delivering a broad range of projects over his career. He is able to offer his team technical solutions where required, applying his practical skills to any issues

*Graduate Diploma in Construction Project Management | BTEC HNC Mechanical Engineering | • BTEC ONC – Electrical & Electronic Principals | • Machining / Mechanical Skills, City & Guilds*

Jon is a skilled and experienced Civil Engineer and Project Manager, with over 20 years' experience in New Zealand, United Kingdom and France. His experience spans contracting, project management, client representation, procurement and design. He has benefited from working on a diverse range of projects from multi-billion-pound infrastructure improvements in London to industrial developments in France and various civil and rail projects in New Zealand.

Jon has been integral in the growth of Libbet working closely with Wayne and the management team to increase the workforce, employing skilled and experienced teams, whilst assisting in the successful procurement and delivery of key projects, assisting in the increase of turn-over. He also assisted in the application and development of obtaining Libbet's ISO Certification and works closely with Sean Langford (HSEQ Manager) in maintaining this certification. Jon has a highly collaborative contract approach, liaising with internal teams, clients and key stakeholders. This is evident through his project portfolio, where he has managed complex delivery programmes and crews to produce highly successful outcomes.

**JON WILKINSON** |  
ENGINEER / PROJECT  
MANAGER



*Bachelor Civil Engineering*





**MARTY CRAILL** |  
PROJECT MANAGER

Marty is a highly skilled and experienced Project Manager with over 22 years of experience on a number of diverse civil projects throughout Australasia and the Pacific. He joined Libbet as a Project Manager in 2021 and has brought with him a wealth of knowledge and experience from managing a variety of civil projects from wind farms, rail infrastructure, airport construction, bridge and pavement construction. During his career, he has garnered extensive technical knowledge along with experience in different contract types and disciplines, from NZ3910, ECI, Design and Build and collaborative agreements. He is well versed in large infrastructure projects, and this is evident across his project portfolio of managing a range of complex and high-profile projects.

Marty has a strong focus on Zero Harm and always ensures that safety is a key priority onsite. Marty is an excellent communicator and develops proactive working relationships with key stakeholders. With a calm and methodical approach, strong work ethic and a 'whatever it takes' attitude to get the job done, Marty will ensure the project is delivered on time and to budget.

---

Sean is an experienced Health, Safety, Environment and Quality manager with over 10 years' experience in the industry. His construction and project management experience helps ensure ongoing professional development through effectively engaging with our employees and clients and instilling the Libbet HSEQ values in all our people and projects.

Sean champions safety and wellbeing for staff and subcontractors, with an unwavering belief that we can undertake all activities safely and mindful of the impact we have on our neighbourhoods without compromising on quality. He works closely with the project teams to ensure that best practice is achieved, advises solutions, coaches and mentors employees on all health, safety, environmental and quality measures and compliance. He assists the teams in identifying critical risks and providing mitigations to how they can be eliminated or minimised.

**SEAN LANGFORD** |  
HSEQ MANAGER



*Unitec Graduate - Certificate in Construction Site Safety | Internal Auditing Course | ICAM Investigation Techniques course | ISO9001, 14001 and 45001 courses | NEBOSH*

---



**CHRIS HOOD** |  
SURVEYOR

Chris is an accomplished Engineering & Land Surveyor, having worked across Australia, New Zealand and the UK. He has led teams on infrastructure and development projects as well as a brief period in the UK working as an Engineer. He is experienced across all facets of surveying and is currently working towards registration as a Licensed Cadastral Surveyor in New Zealand to compliment his background in engineering and construction survey with formal land transfer credentials.

Prior to joining Libbet in 2022, whilst working at a consultancy, Chris held a number of digital and survey lead roles across major transport projects in New Zealand, managing the flow of digital data between design disciplines and construction teams. He is well versed in several civil design and modelling software packages himself, allowing him to bring safety initiatives and cost savings to the forefront for Libbet and clients through the use of technology.

*Bachelor of Surveying*



## Our Clients Include;



*"The Libbet team on the Penrose 3rd Platform project worked within tight programme constraints to deliver an outstanding outcome for the client and operator teams.*

*This kind of project very rarely succeeds and Libbet are commended for delivering this short notice for AT. As noted, programme was achieved despite all indications showing that this was probably not possible. No other contractor in Auckland would have been able to do this. Safe Work practices in the rail corridor are commended. No issues" Scott Keane, Auckland Transport, PT Development Manager*

## Contact Us

Libbet Limited  
M/6 Henderson Place  
Onehunga, 1061

PO Box 12534  
Penrose 1642

[www.libbet.co.nz](http://www.libbet.co.nz)

---

Wayne Edwards  
Managing Director

P: +64 21 124 9409  
E: [wayne@libbet.co.nz](mailto:wayne@libbet.co.nz)

